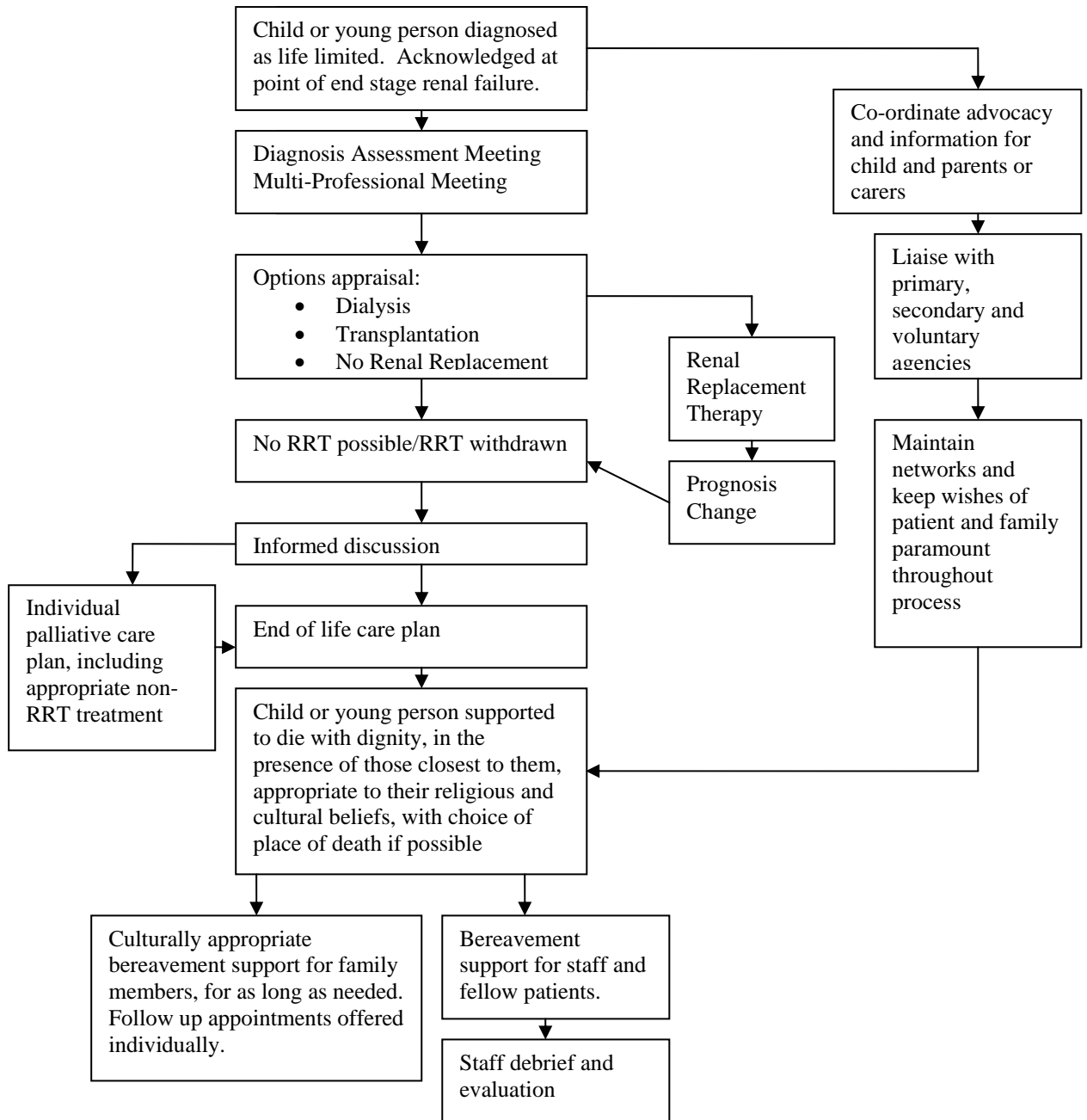


Example of good practice – end of life care pathway



Throughout process, child to be involved in making decisions to the fullest extent possible for their level of development

Throughout process, support provided for following people

Parents or carers	Siblings	Other Patients
Staff	School	Community

More detailed guidance on palliative care for children and young people is provided by ACT. Further guidance on end of life care is provided in the Liverpool Care Pathway, and in *Commissioning Children's and Young People's Palliative Care Services*.